

PLANNING + LANDSCAPE ARCHITECTURE

STATEMENT OF QUALIFICATIONS

BOHLER //

WHO WE ARE

Our studio is a collaborative environment made up of landscape architects from diverse backgrounds in the industry. We provide Planning and Landscape Architecture as an integral part of our land development and urban design approach in public and private sector markets.

Our skilled planners and landscape architects work closely with our civil engineers and other professionals to develop and evaluate alternative master plan and site design concepts.

We focus on understanding a site's inherent qualities, environmental assets and constraints emphasizing a creative approach to placemaking and enhancement of the public realm.



LANDSCAPE ARCHITECTURAL SERVICES

- + Feasibility/Massing Studies
- + Urban Regeneration and Revitalization
- + Community Engagement
- + Master Planning
- + Sustainable Landscapes
- + Streetscape Planning and Design
- + Park and Plaza Design
- + Lighting Design
- + Sports Field Design

MARKET SECTOR & PROJECT TYPES

- + Urban Mixed-Use Communities
- + Retail and Commercial Development
- + Residential and Community Planning
- + Streetscape and Parks
- + Resort and Hospitality
- + Education: K-12 and Campus
- + Healthcare
- + Municipal Design



SELECT PROJECT PORTFOLIO

PLANNING + LANDSCAPE ARCHITECTURE STUDIO



WESTBOROUGH WOODS | WESTBOROUGH, MA

BOHLER //



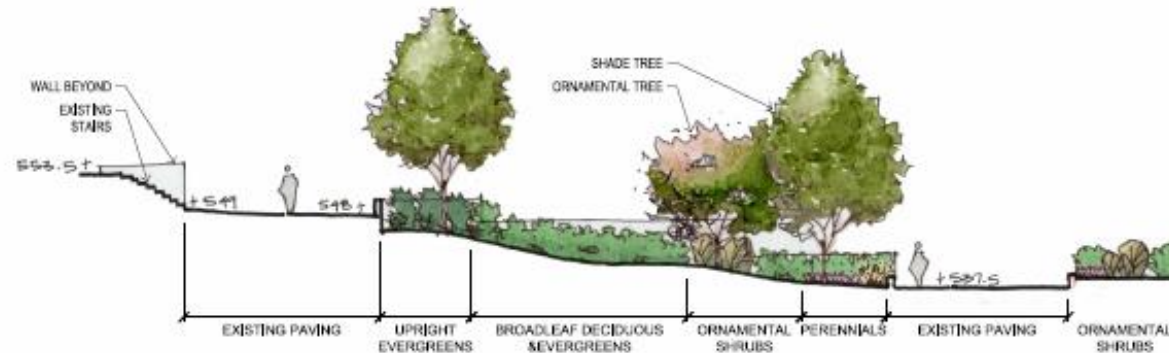
PARC WESTBOROUGH | WESTBOROUGH, MA

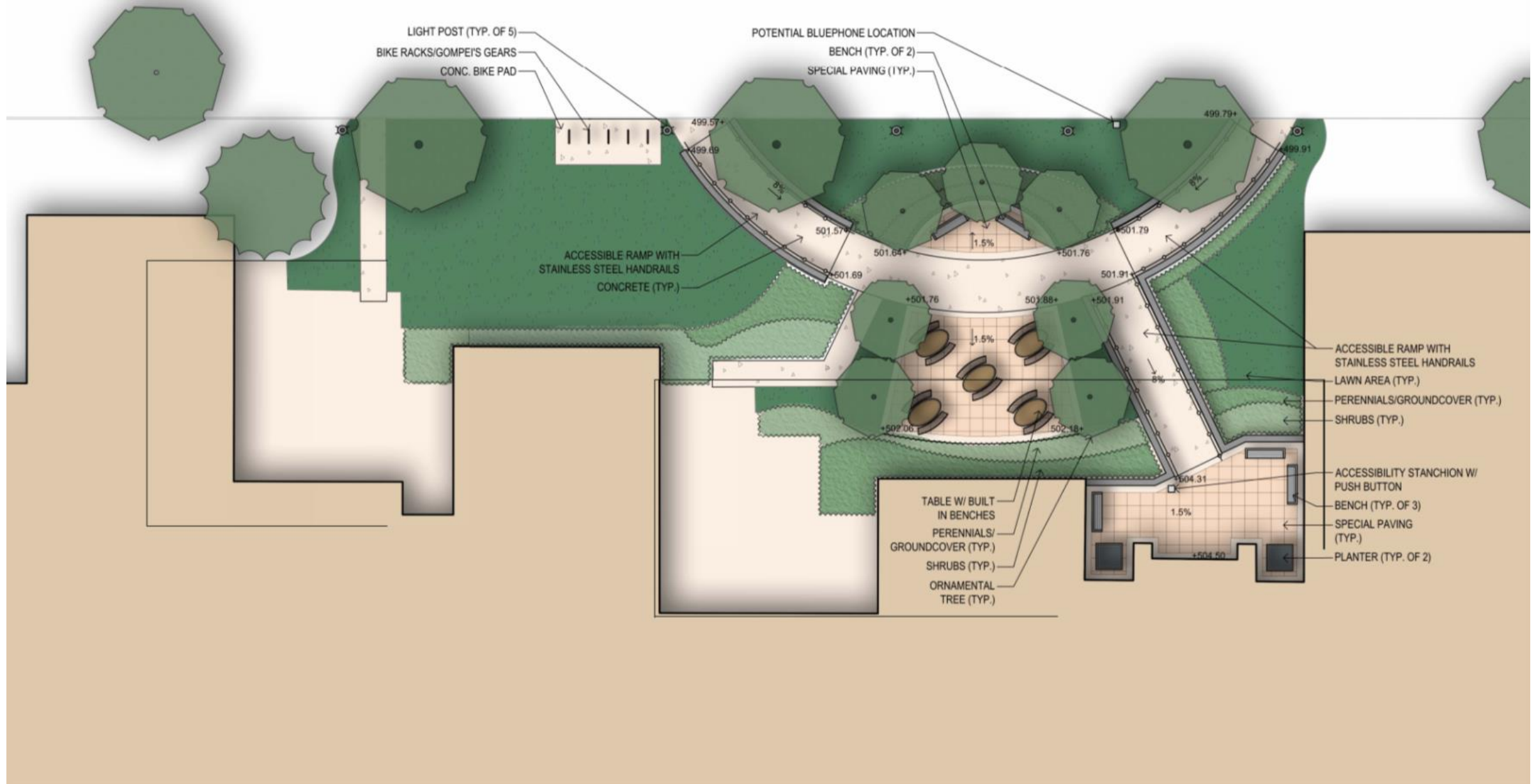
BOHLER //



MIXED-USE DEVELOPMENT | BOSTON, MA

BOHLER //

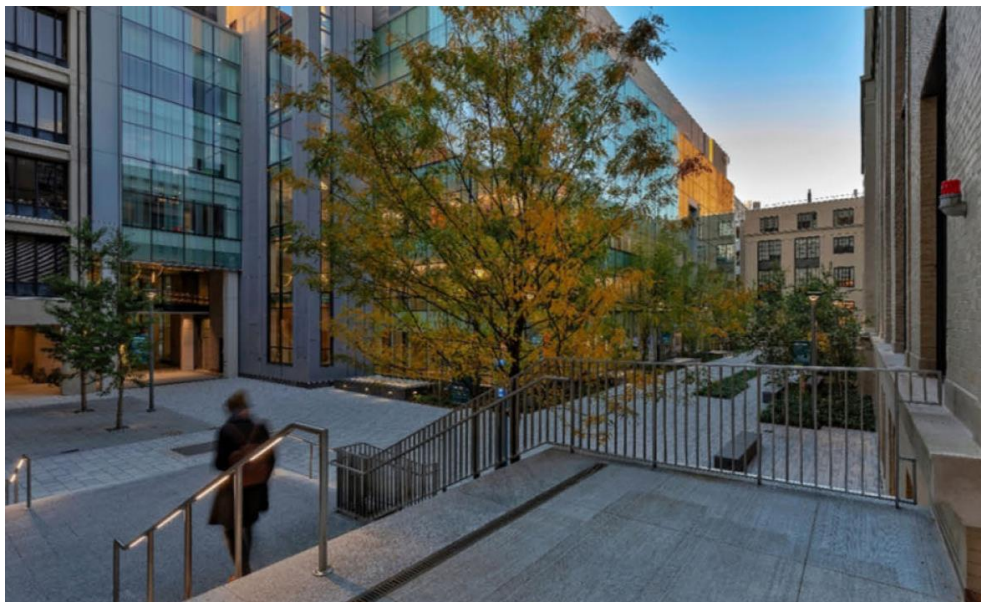






WORCESTER POLYTECHNIC INSTITUTE | PRESIDENT'S HOUSE

BOHLER //



MIT.nano | CAMBRIDGE, MA

BOHLER //



SOUTH SHORE HOSPITAL | WEYMOUTH, MA

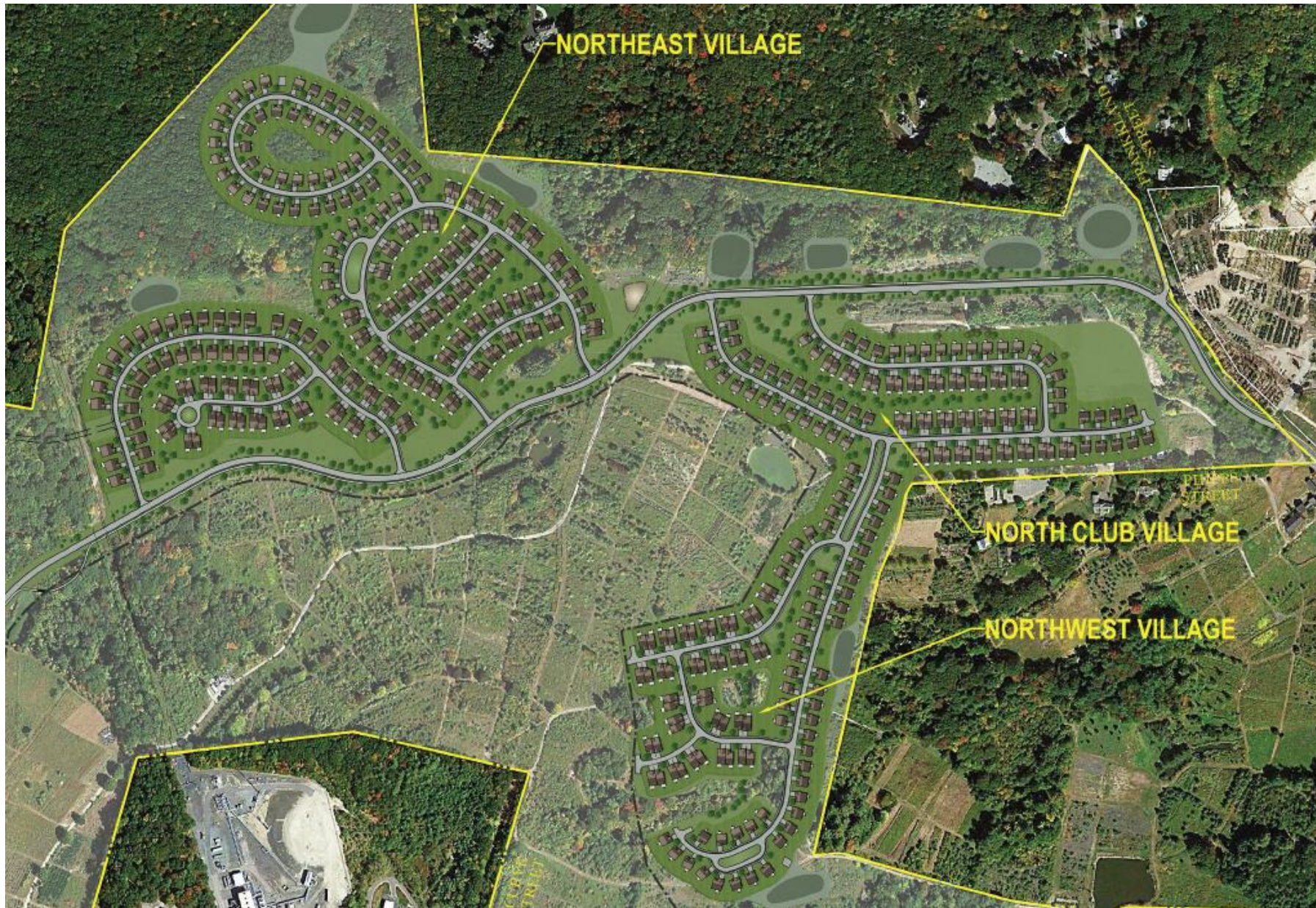
BOHLER //



ALBANY MEDICAL CENTER | ALBANY, NY



BOHLER //



LEGACY FARMS | HOPKINTON, MA

BOHLER //



AVALON HILLTOP | SAUGUS, MA

BOHLER //



AVALON HILLTOP | SAUGUS, MA



FOREST RIDGE | WINCHESTER, MA

BOHLER //

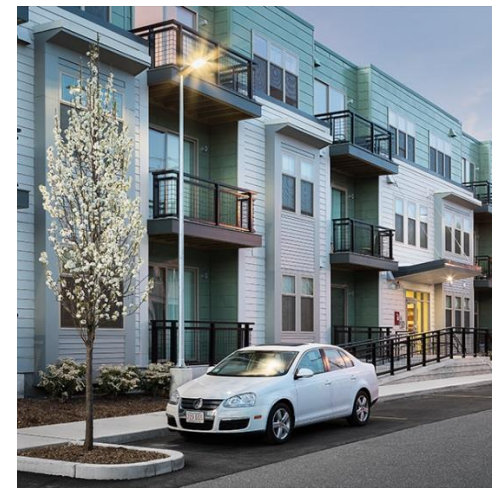


ABBNEYVILLE COMMONS | NORFOLK, MA

BOHLER //



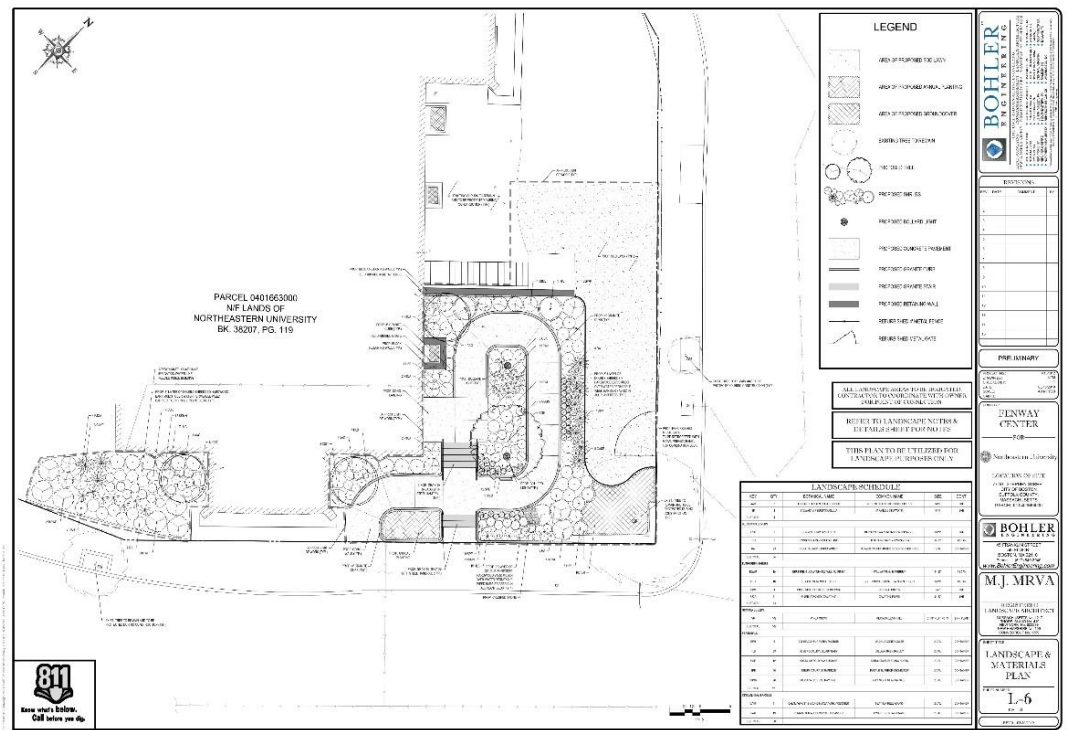
BAYSTONE RESIDENTIAL | FRAMINGHAM, MA

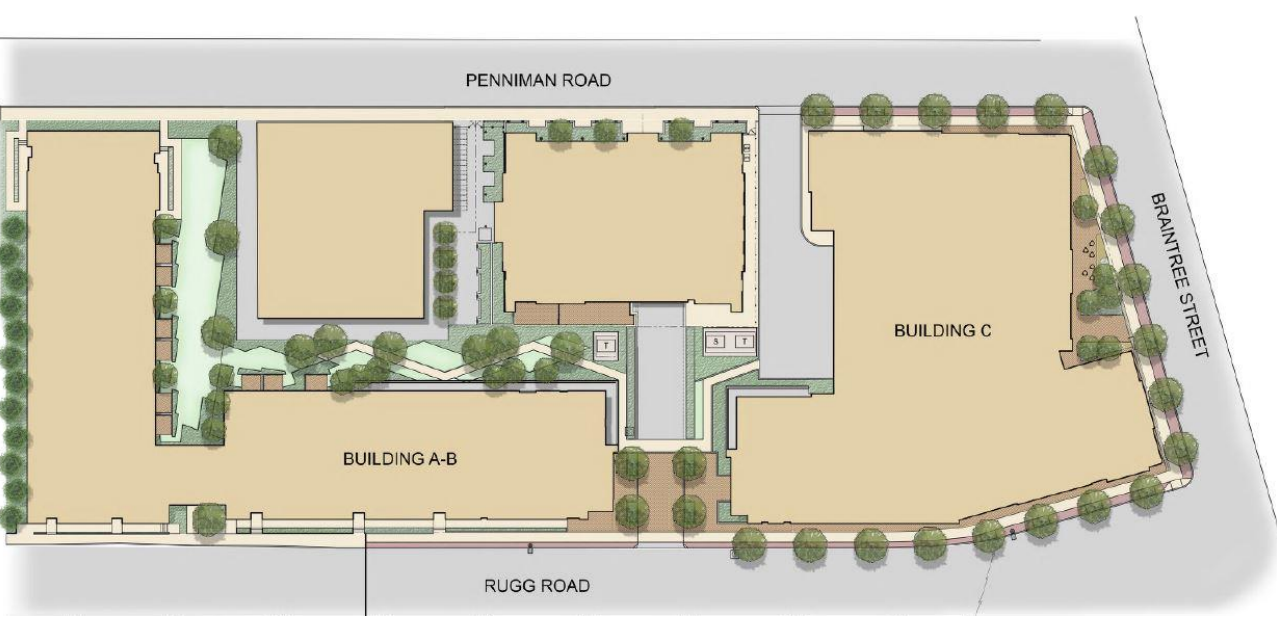


MAXWELL'S GREEN | SOMERVILLE, MA

BOHLER //

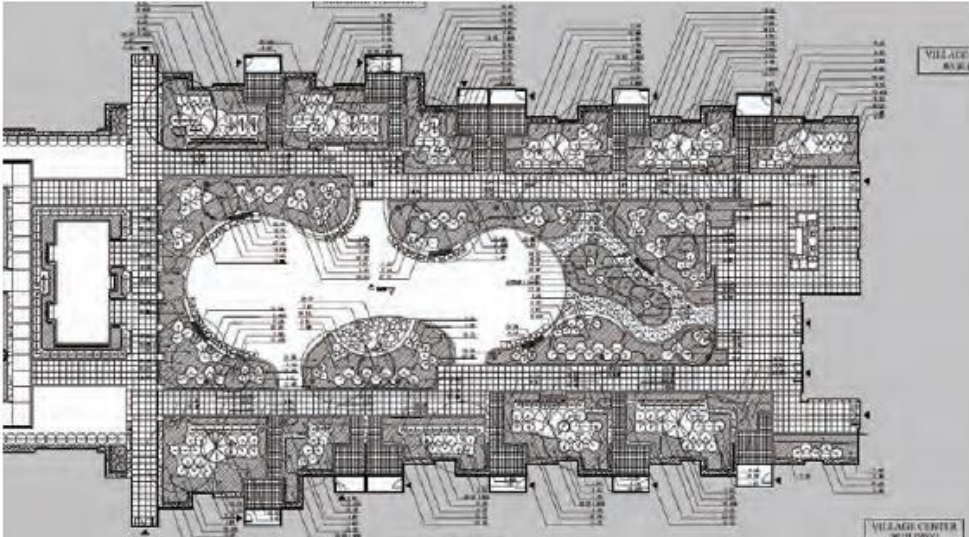
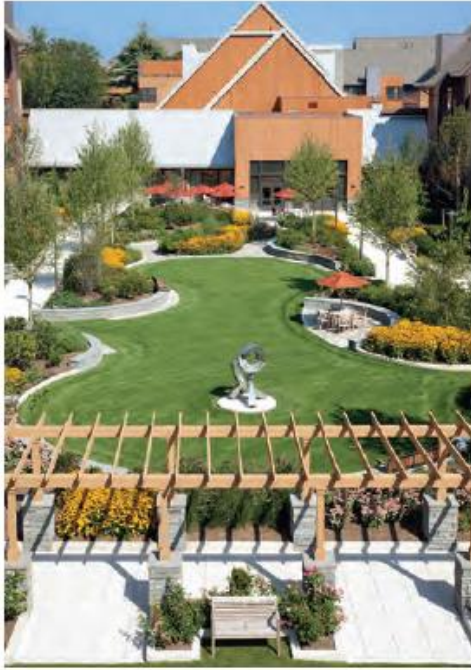
**BOHLER //**





40 RUGG ROAD | ALLSTON, MA

BOHLER //

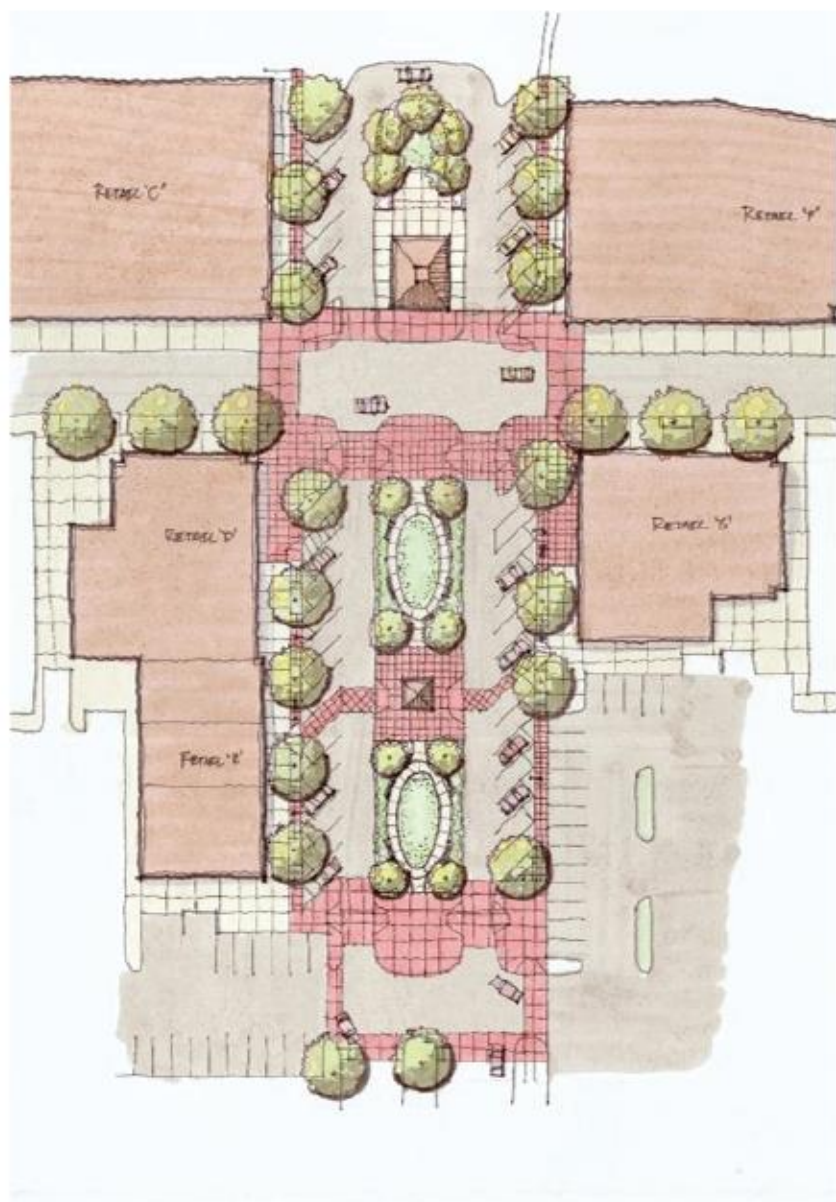


NEWBRIDGE ON THE CHARLES | DEDHAM, MA
Completed by Project Manager, Jason Miller, RLA

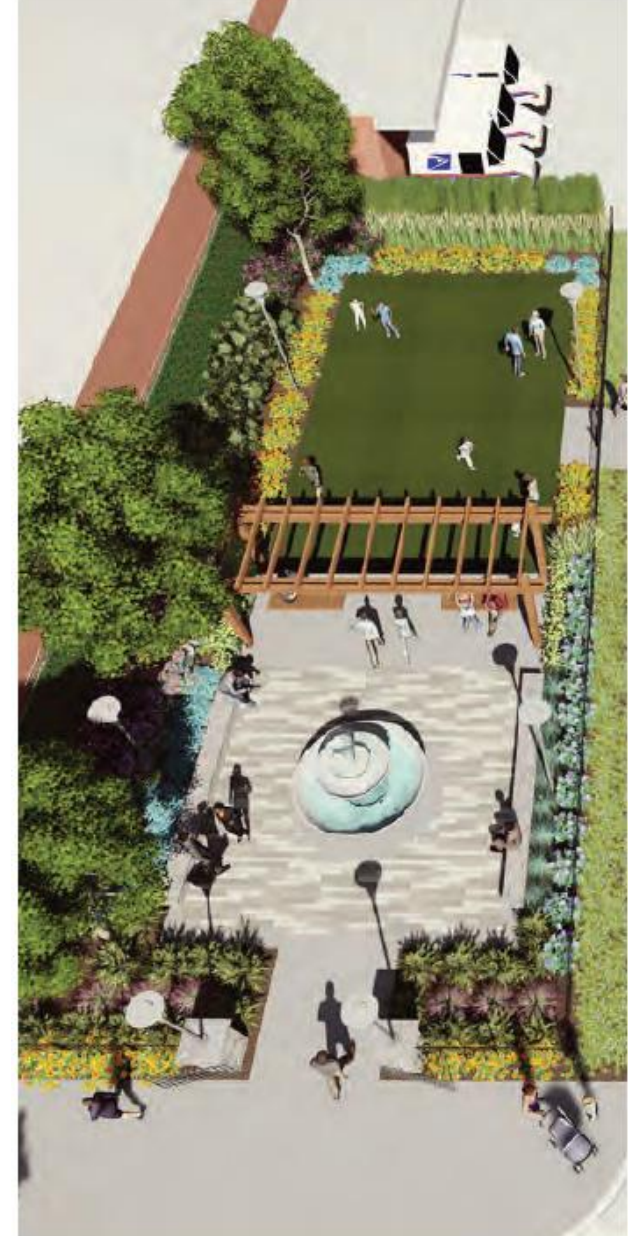


OAK GROVE VILLAGE – MIXED-USE | MALDEN, MA
Completed by Project Manager, Jay Emperor, RLA

BOHLER //



BROAD HOLLOW COMMONS | FARMINGDALE, NY
Completed by Project Manager, Leslie Fanger, RLA



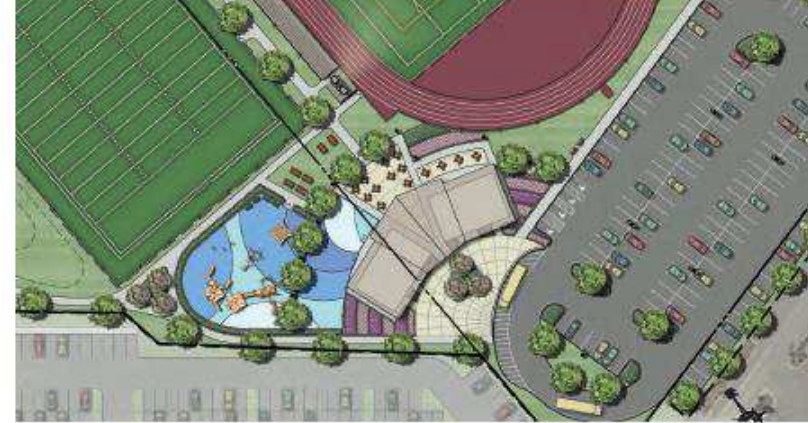
WASHINGTON PLACE | NEWTON, MA

BOHLER //



ABBEEVILLE COMMONS | NORFOLK, MA

BOHLER //



RIVERGREEN MIXED USE DEVELOPMENT | EVERETT, MA

BOHLER //



CHARLES RIVER COUNTRY CLUB | NEWTON, MA

BOHLER //



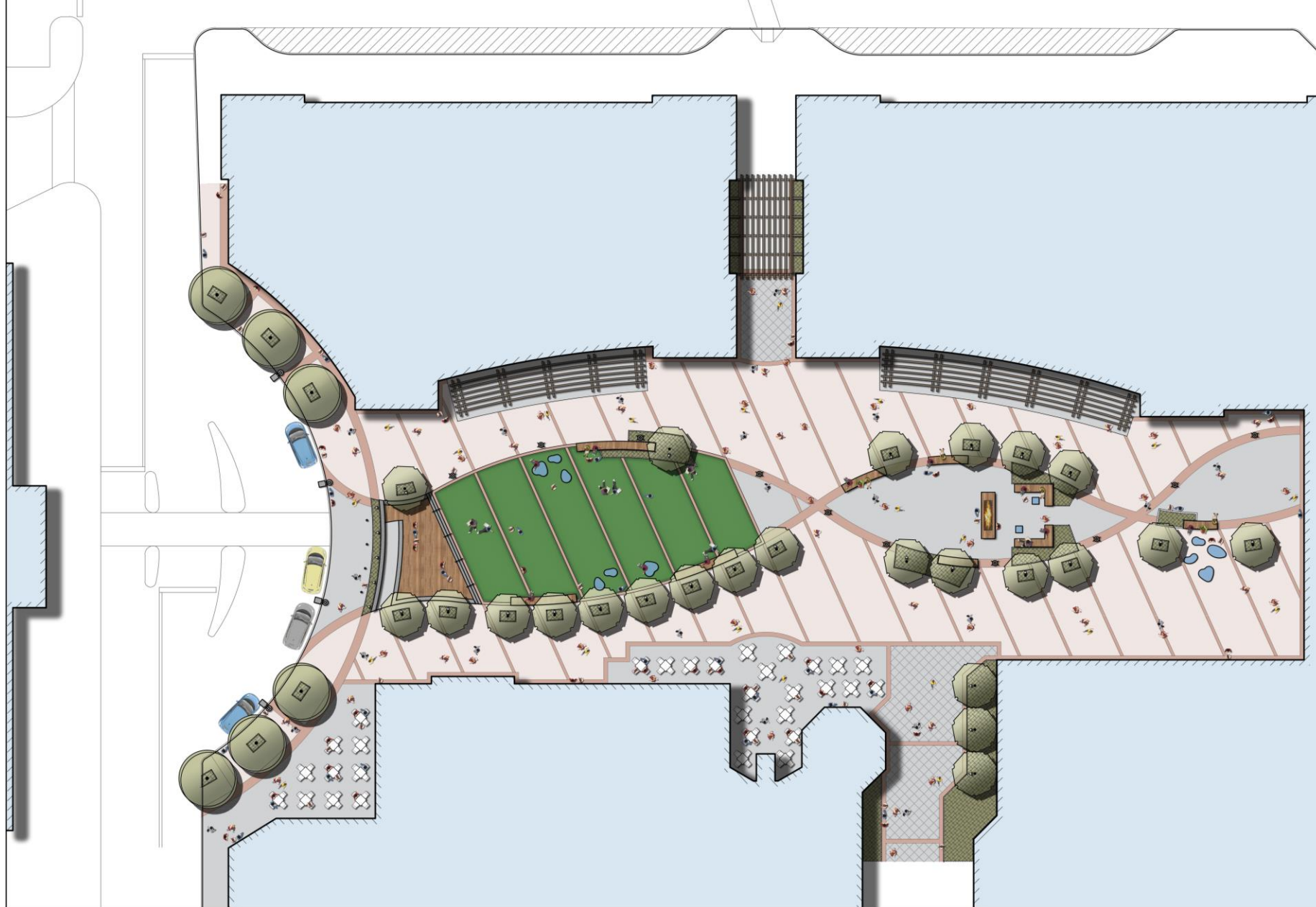
FRANKLIN COUNTRY CLUB | FRANKLIN, MA

BOHLER //



THE HAVEN COUNTRY CLUB | WEST BOYLSTON, MA

BOHLER //



SMITH HAVEN MALL | LAKE GROVE VILLAGE, NY



SHIPWAY 221 | NEW LONDON, CT



61 LOCUST STREET DEVELOPMENT | MEDFORD, MA



SUBARU OF NEW ENGLAND CORPORATE HEADQUARTERS | NORWOOD, MA
Completed by Project Manager, Leslie Fanger, RLA

BOHLER //



SHREWSBURY PUBLIC LIBRARY | SHREWSBURY, MA

BOHLER //



AUBURN MIDDLE SCHOOL | AUBURN, MA

BOHLER //



UXBRIDGE HIGH SCHOOL AND ATHLETIC COMPLEX | UXBRIDGE, MA
Completed by Project Manager, Leslie Fanger, RLA

BOHLER //



CAPE ARUNDEL COTTAGE PRESERVE | ARUNDEL, ME
Completed by Project Manager, Leslie Fanger, RLA

BOHLER //



COHASSET GOLD CLUB | COHASSET, MA

BOHLER //



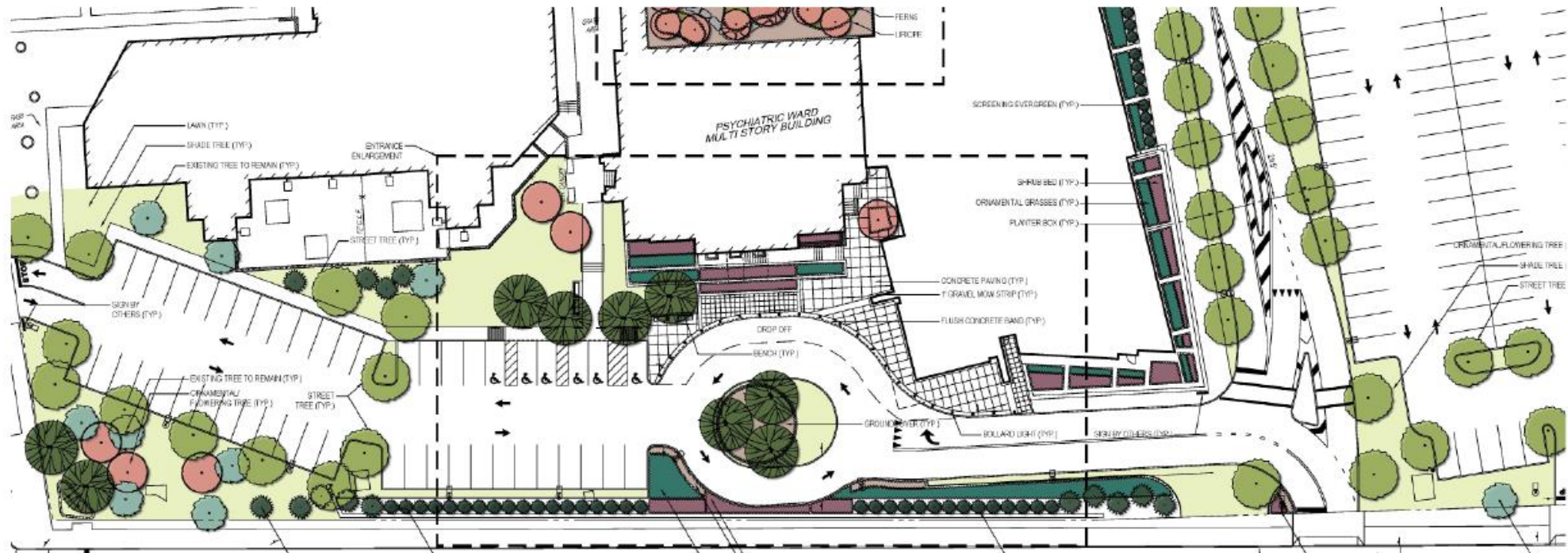
MIXED-USE DEVELOPMENT | NY

BOHLER //



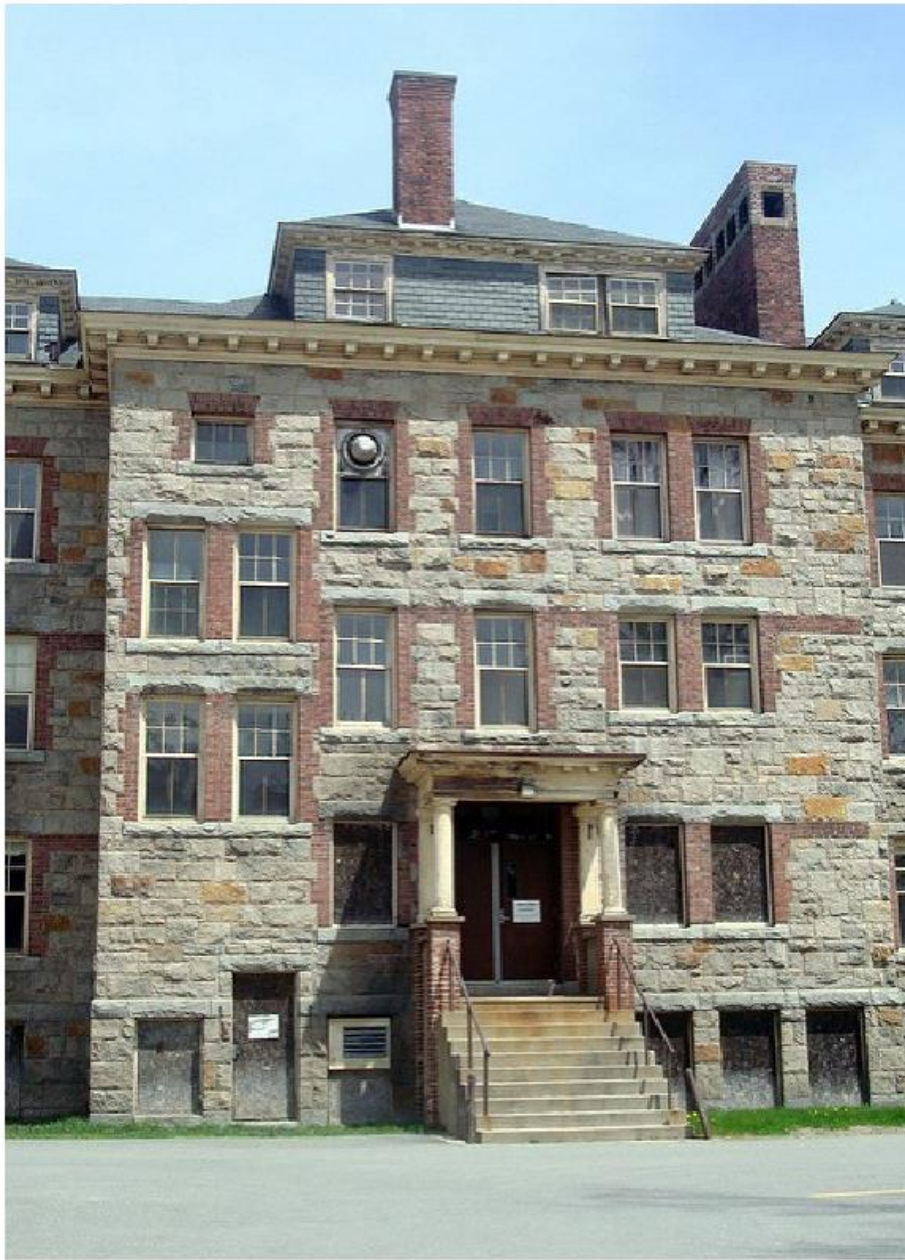
RESIDENCES AT PENNIMAN HILL | HINGHAM, MA

BOHLER //



RICHMOND UNIVERSITY MEDICAL CENTER | STATEN ISLAND, NY

BOHLER //



WBDC - STATE HOSPITAL REDEVELOPMENT | WORCESTER, MA

BOHLER //



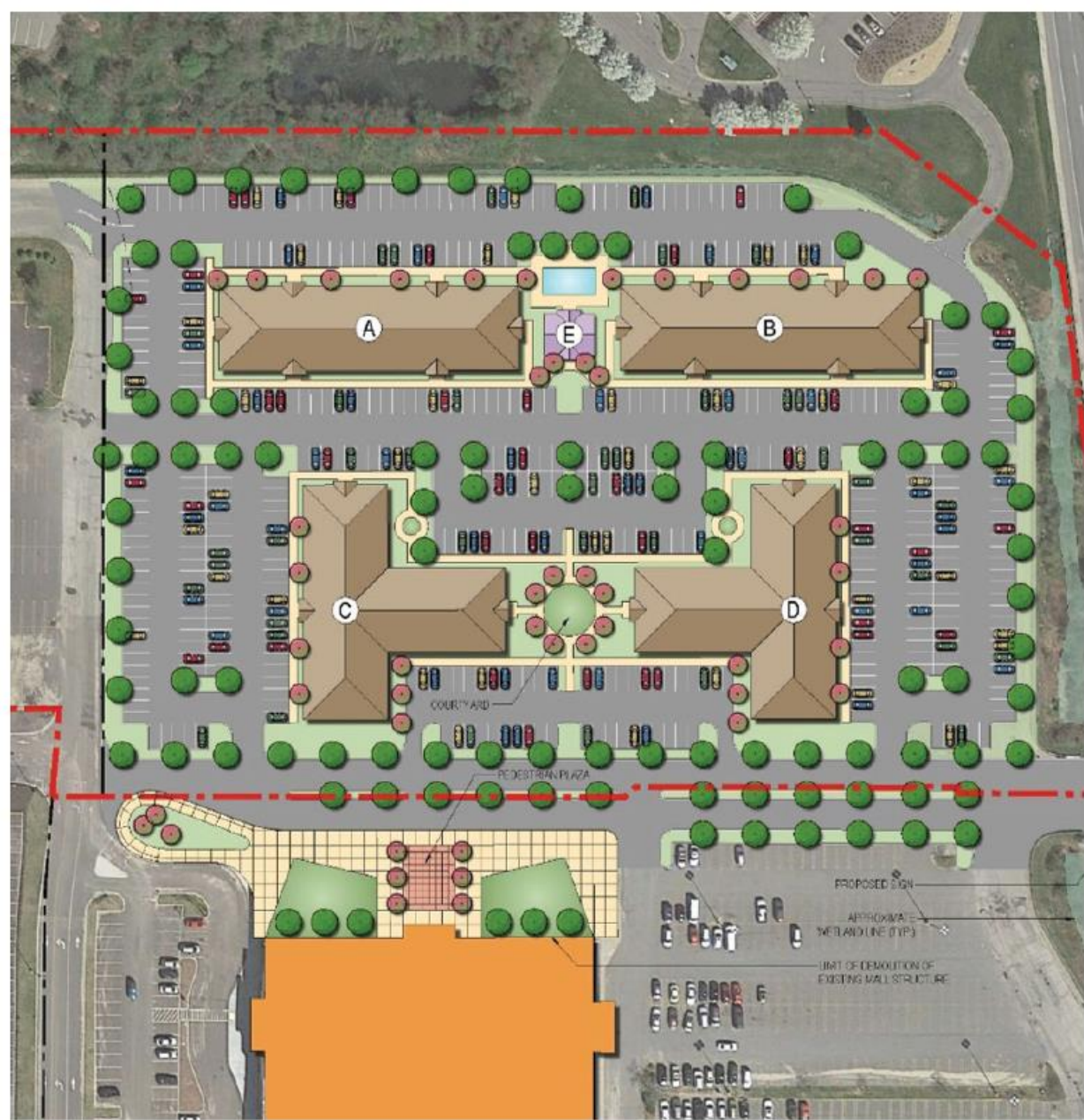
MIXED-USE DEVELOPMENT | NANTUCKET, MA

BOHLER //



MIXED-USE DEVELOPMENT | NY

BOHLER //



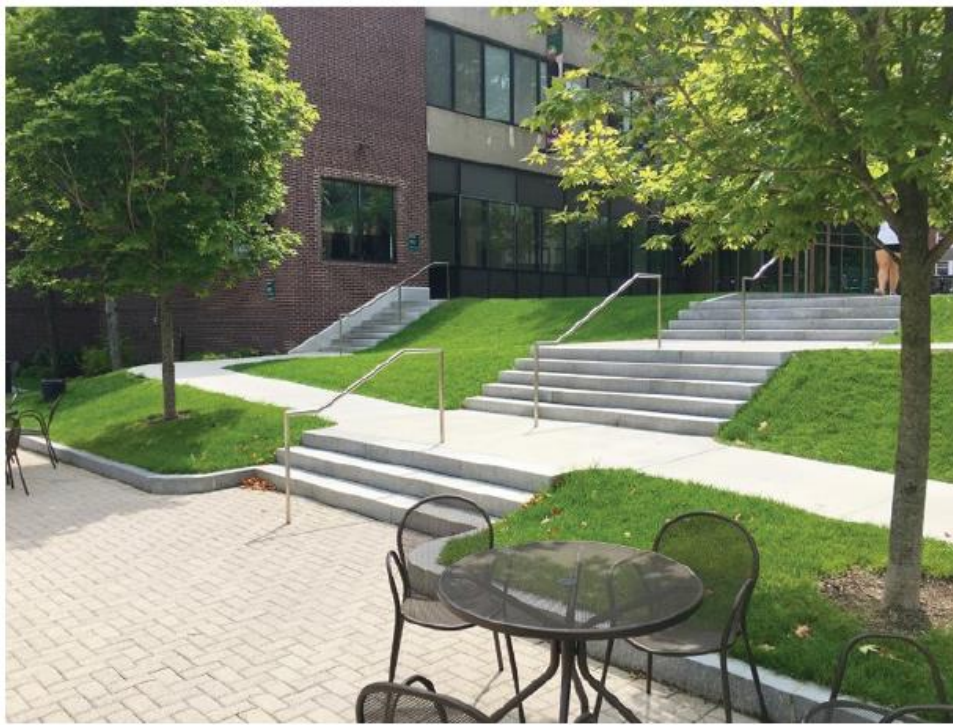
MIXED-USE DEVELOPMENT | MA

BOHLER //



ROCHESTER INSTITUTE OF TECHNOLOGY | ROCHESTER, NY
Completed by Project Manager, Jay Emperor, RLA

BOHLER //



LESLEY UNIVERSITY | CAMBRIDGE, MA
Completed by Project Manager, Jay Emperor, RLA

BOHLER //



CENTRAL CONNECTICUT STATE UNIVERSITY | NEW BRITAIN, CT
Completed by Project Manager, Matthew Mrva, RLA



WHY BOHLER LANDSCAPE ARCHITECTURE?

- + Creative approach to placemaking and enhancement of the public realm
- + Design sensibility not often found in a “civil engineer’s LA group”
- + Integrated design process, minimizing holes in scope and eliminating overlap
- + High quality graphics/renderings that convey design ideas and quickly build consensus
- + Our experienced team of dedicated landscape architects make the Bohler Planning + Landscape Architecture Studio a “go-to” group in the industry

COVERAGE

Albany, NY
Atlanta, GA
Boca Raton, FL
Boston, MA
Bowie, MD
Chalfont, PA
Charlotte, NC
Dallas, TX
Hartford, CT

Hauppauge, NY
Herndon, VA
Lehigh Valley, PA
Manasquan, NJ
Mount Laurel, NJ
New York, NY
Philadelphia, PA
Pittsburgh, PA
Raleigh, NC

Rochester, NY
Rehoboth Beach, DE
Southborough, MA
Tampa, FL
Towson, MD
Warren, NJ
Warrenton, VA
Washington, DC

26
Offices

700+
Employees

35+
Years of
Experience

Contact: Matthew Mrva, RLA, Director of Planning & Landscape Architecture
mmrva@bohlereng.com | 508.480.9900
www.bohlerengineering.com

BOHLER //